



Impress Guide

Chapter 10
Setting Up and
Customizing Impress

OpenOffice.org

Copyright

This document is Copyright © 2007 by its contributors as listed in the section titled **Authors**. You can distribute it and/or modify it under the terms of either the GNU General Public License, version 2 or later (<http://www.gnu.org/licenses/gpl.html>), or the Creative Commons Attribution License, version 2.5 (<http://creativecommons.org/licenses/by/2.5/>) or later.

All trademarks within this guide belong to their legitimate owners.

Authors

Jean Hollis Weber
Peter Hillier-Brook

Feedback

Maintainer: Jean Hollis Weber
Please direct any comments or suggestions about this document to:
authors@user-faq.openoffice.org

Acknowledgments

Some portions of this chapter first appeared in Chapter 5 of *Getting Started with OpenOffice.org 2.0*.

Publication date and software version

Published 19 February 2007. Based on OpenOffice.org 2.1.



You can download an editable version of this document from
<http://oooauthors.org/en/authors/userguide2/published/>

Contents

Copyright.....	i
Authors.....	i
Feedback.....	i
Acknowledgments.....	i
Publication date and software version.....	i
Choosing options that affect all of OOo.....	1
User Data options.....	1
Print options.....	1
Color options.....	1
Appearance options.....	2
Choosing options for Impress.....	3
General options.....	3
View options.....	4
Grid options.....	5
Print options.....	7
Customizing the user interface.....	7
Customizing the menu font.....	7
Customizing menu content.....	8
Customizing toolbars.....	9
Customizing keyboard shortcuts.....	10

Choosing options that affect all of OOo

This section covers some of the settings that apply to all the components of OpenOffice.org. Other general options are discussed in Chapter 5 (Setting Up OpenOffice.org) in the *Getting Started* guide.

- 1) Click **Tools > Options**. The list on the left-hand side varies depending on which component of OOo is open. The illustrations in this chapter show the list as it appears when when OpenOffice.org Impress is open.
- 2) Click the + sign to the left of *OpenOffice.org* on the left-hand side. A list of subsections drops down.

Note The **Back** button has the same effect on all pages of the Options dialog. It resets the options to the values that were in place when you opened OpenOffice.org.

User Data options

Impress uses the first and last name stored in the User Data page to fill in the *Created* and *Modified* fields in the document properties, and the optional *Author* field often used in the footer of a presentation, so you will want to ensure that your name appears there. To do this:

- 1) In the Options dialog, click **OpenOffice.org > User Data**.
- 2) Fill in the form on the *OpenOffice.org – User Data* page or delete any existing incorrect information.

Print options

Set the print options to suit your default printer and your most common printing method. You can change these settings at any time, either through this dialog or during the printing process (by clicking the **Options** button on the Print dialog).

In the Options dialog, click **OpenOffice.org > User Data**.

See Chapter 9 (Printing, e-mailing, exporting, and saving slide shows) for more about the options on this page.

Color options

On the OpenOffice.org – Colors page (Figure 1), you can specify colors to use in OOo documents. You can select a color from a color table, edit an existing color, or define new colors. These colors will then be available in color selection palettes in all components of OOo. You can also define colors within Impress, but those colors will not be available to other components of OOo.

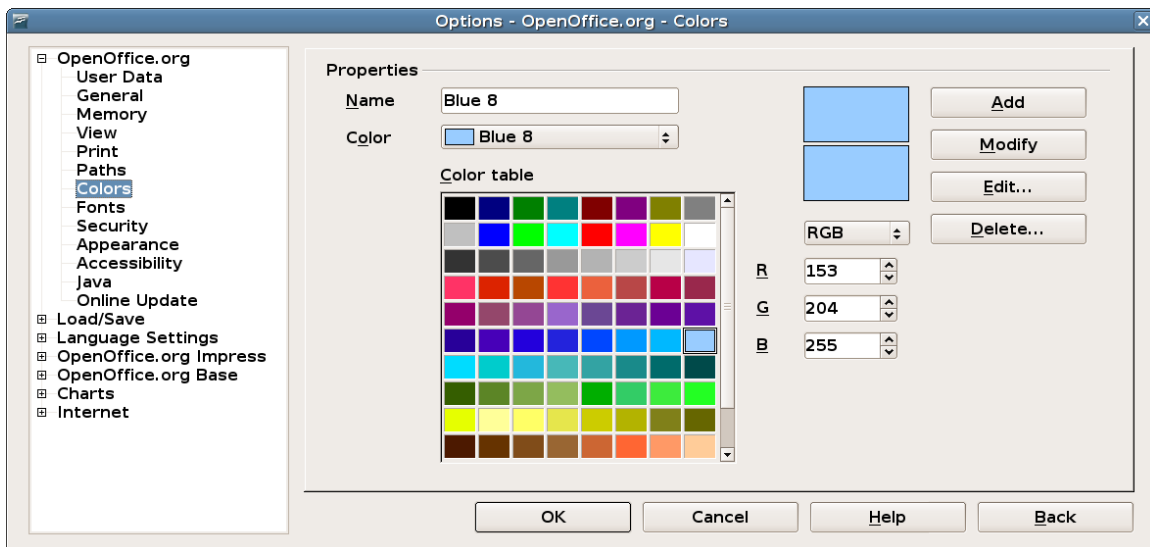


Figure 1. Defining colors to use in color palettes in OOo

Appearance options

On the *OpenOffice.org – Appearance* page (Figure 2), you can specify which items are visible and the colors used to display various items.

- 1) In the Options dialog, click **OpenOffice.org > Appearance**.
- 2) The only choice specific to Impress (and Draw) is the color of the grid points. Scroll down in the page until you find **Drawing / Presentation** (see Figure 2).

To change the default color for grid points, click the down-arrow by the color and select a new color from the pop-up box.

- 3) If you wish too save your color changes as a color scheme, click **Save**, type a name in the *Scheme* box; then click **OK**.

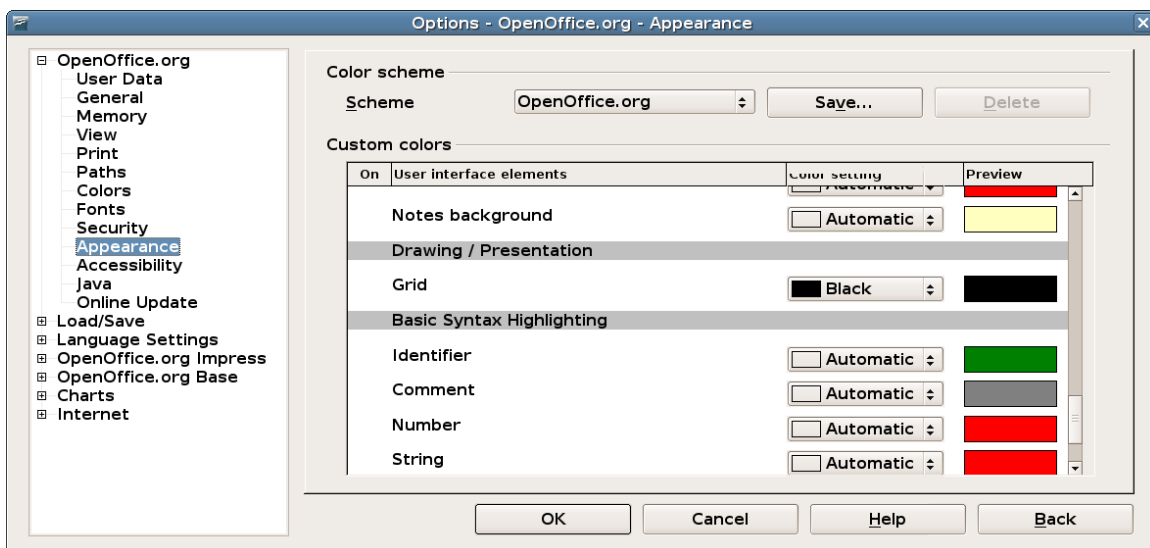


Figure 2. Changing the color of grid points in Impress and Draw

Choosing options for Impress

In the Options dialog, click the + sign to the left of *OpenOffice.org Impress* on the left-hand side. A list of subsections drops down. (See Figure 3.)

General options

In the Options dialog, click **OpenOffice.org > Impress > General**.

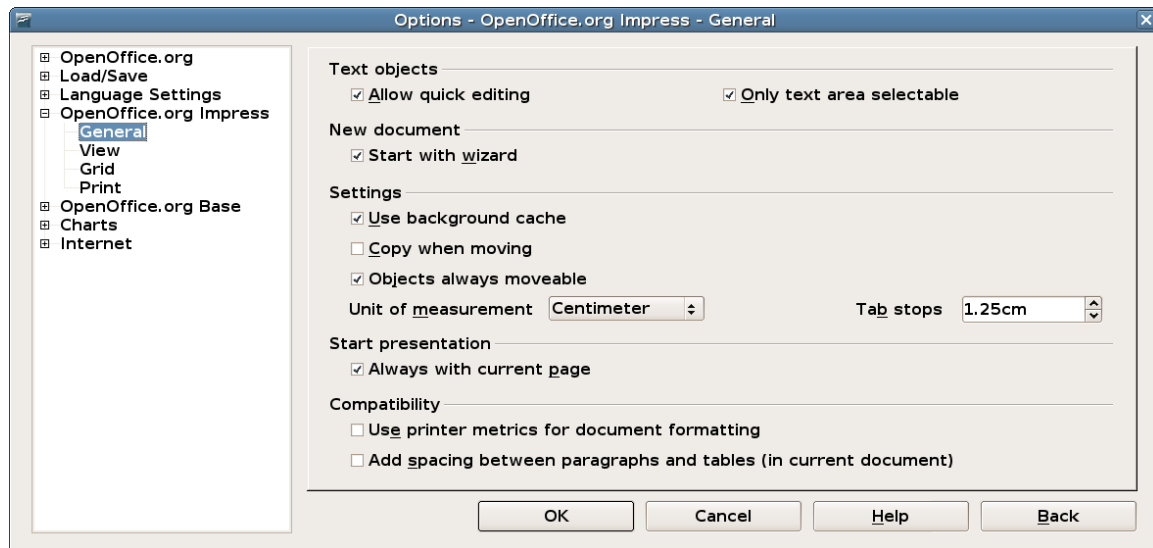




Figure 3: Specifying general options for Impress

Text objects section

Allow quick editing sets Impress to immediately switch to the text editing mode when you click a text object. You can also activate text editing mode through the **Allow Quick Editing** icon  on the Options toolbar.

Only text area selectable sets Impress to select a text frame when you click on text. In the area of the text frame that is not filled with text, an object behind the text frame can be selected. You can also activate this mode through the **Select Text Area Only** icon  on the Options toolbar.

New document section

Start with Wizard sets Impress to start with the Presentation Wizard when opening a presentation with **File > New > Presentation**.

Settings section

Use background cache sets Impress to use the cache for displaying objects on the master page. This setting speeds up the display. Unmark this box if you want to display changing contents on the master page.

Copy when moving automatically creates a copy when you move, rotate or resize an object while holding down the *Ctrl* key. The original object will remain in its current position and size.

Objects always moveable lets you move an object with the **Rotate** tool enabled. If this box is not marked, the **Rotate** tool can only be used to rotate an object.

Unit of measurement determines the unit of measurement for presentations.

Tab stops defines the spacing between tab stops.

Start presentation section

Always with current page specifies that a presentation starts with the current slide. Unmark this box to always start a presentation with the first page.

Compatibility section

The settings in this area are valid for the current document only.

Use printer metrics for document formatting applies printer metrics for printing and for formatting the display on the screen. If this box is not checked, a printer-independent layout is used for screen display and printing.

Add spacing between paragraphs in the current document calculates the paragraph spacing in Impress exactly like Microsoft PowerPoint does. Microsoft PowerPoint adds the bottom spacing of a paragraph to the top spacing of the next paragraph to calculate the total spacing between both paragraphs. Impress normally uses only the larger of the two spacings.

View options

In the Options dialog, click **OpenOffice.org > Impress > View**.

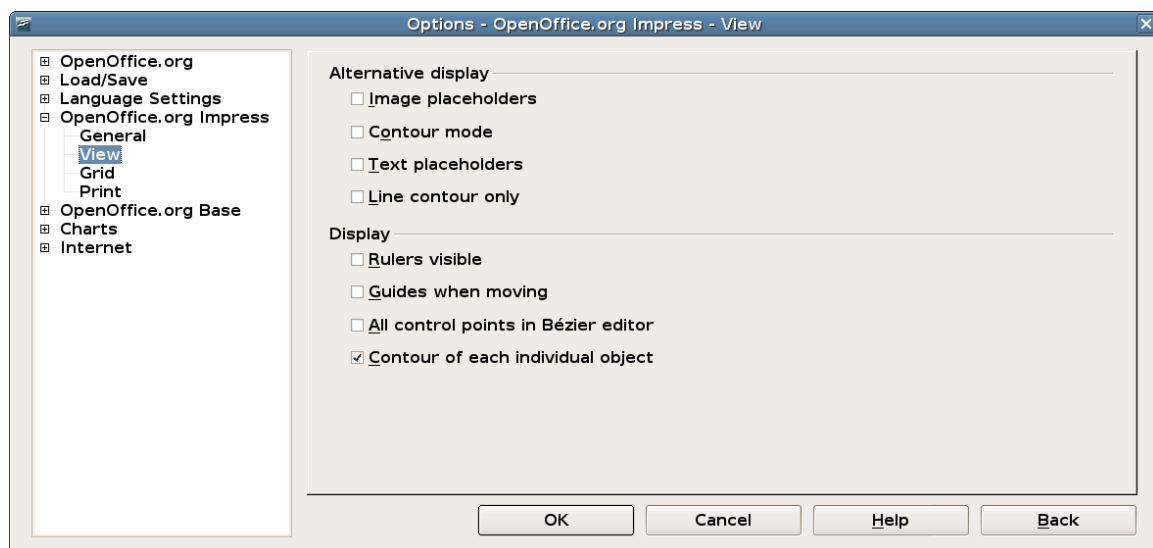




Figure 4: Specifying view options for Impress


Alternative display section


If graphics elements are very complex, the screen display may build up a little slower than usual. Choosing alternative display options prevents some items from displaying on the screen during editing and thus speeds up screen redisplay.

Image placeholders displays only the contour of inserted graphics. You can also use the

Picture Placeholders icon  on the Options toolbar.


Contour mode displays only the contour of filled drawings, without the fill. You can also use the **Contour Mode** icon  on the Options toolbar.

Text placeholders displays a text window without its text contents. You can also use the **Text placeholders** icon  on the Options toolbar.

Line contour only displays lines and contours as fine lines, ignoring the currently used line width. You can also use the **Line contour only** icon  on the Options toolbar.

Display section

Rulers visible displays the rulers at the top and the left of the work area.

Guides when moving displays dotted guides that extend beyond the box containing the selected object and which cover the entire work area, helping you position the object when moving it. You can also use the **Guides when moving** icon  on the Options toolbar.

All control points in Bézier editor displays the control points of all Bézier points if you have previously selected a Bézier curve. If this box is not marked, only the control points of the selected Bézier points will be visible.

Contour of each individual object displays the contour line of each individual object when moving the object. This enables you to see if single objects conflict with other objects in the target position. If you do not mark this box, Impress displays only a square contour that includes all selected objects.

Grid options

The Grid page defines the grid settings for Impress. Using a grid helps you determine the exact position of your objects. You can also set this grid in line with the snap grid.

If you have activated the snap grid but wish to move or create individual objects without snap positions, you can press the *Ctrl* to deactivate the snap grid for as long as needed.

In the Options dialog, click **OpenOffice.org > Impress > Grid**.

Grid section

Snap to grid activates the “snap” function.

Visible grid displays grid points on the screen. These points will not display or print as part of a presentation.

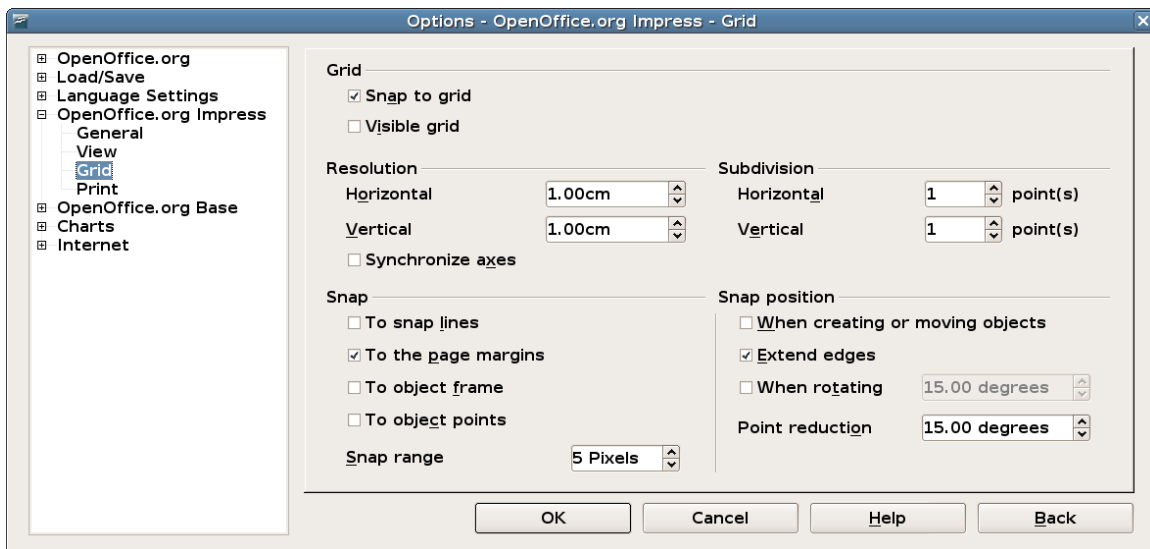



Figure 5: Specifying grid options for Impress


Resolution section


Here you can set the unit of distance for the spacing between horizontal and vertical grid points and subdivisions (intermediate points) of the grid.


Synchronize axes changes the current grid settings symmetrically.

Snap section

To snap lines snaps the edge of a dragged object to the nearest snap line when you release the mouse button. You can also use the **Snap to Guides** icon  on the Options toolbar.

To the page margins aligns the contour of the graphic object to the nearest page margin. The cursor or a contour line of the graphics object must be in the snap range. You can also use the **Snap to Page Margins** icon  on the Options toolbar.

To object frame aligns the contour of the graphic object to the border of the nearest graphic object. The cursor or a contour line of the graphics object must be in the snap range. You can also use the **Snap to Object Border** icon  on the Options toolbar.

To object points aligns the contour of the graphic object to the points of the nearest graphic object. The cursor or a contour line of the graphics object must be in the snap range. You can also use the **Snap to Object Points** icon  on the Options toolbar.

Snap range defines the snap distance between the mouse pointer and the object contour. Impress snaps to a snap point if the mouse pointer is nearer than the distance selected in the **Snap range** box.

Snap position section

When creating or moving objects restricts graphic objects vertically, horizontally or diagonally (45°) when creating or moving them. You can temporarily deactivate this setting by pressing the *Shift* key.

Extend edges creates a square based on the longer side of a rectangle when the *Shift* key is pressed before you release the mouse button. This also applies to an ellipse (a circle will be created based on the longest diameter of the ellipse). When the **Extend edges** box is not marked, a square or a circle will be created based on the shorter side or diameter.

When rotating restricts the rotation of graphic objects within the rotation angle that you selected in the **When rotating** box. If you want to rotate an object outside the defined angle, press the *Ctrl* key when rotating. Release the key when the desired rotation angle is reached.

Point reduction defines the angle for point reduction. When working with polygons, you might find it useful to reduce their editing points.

Print options

In the Options dialog, click **OpenOffice.org > Impress > Print**.

See Chapter 9 (Printing, e-mailing, exporting, and saving slide shows) for more about the options on this page.

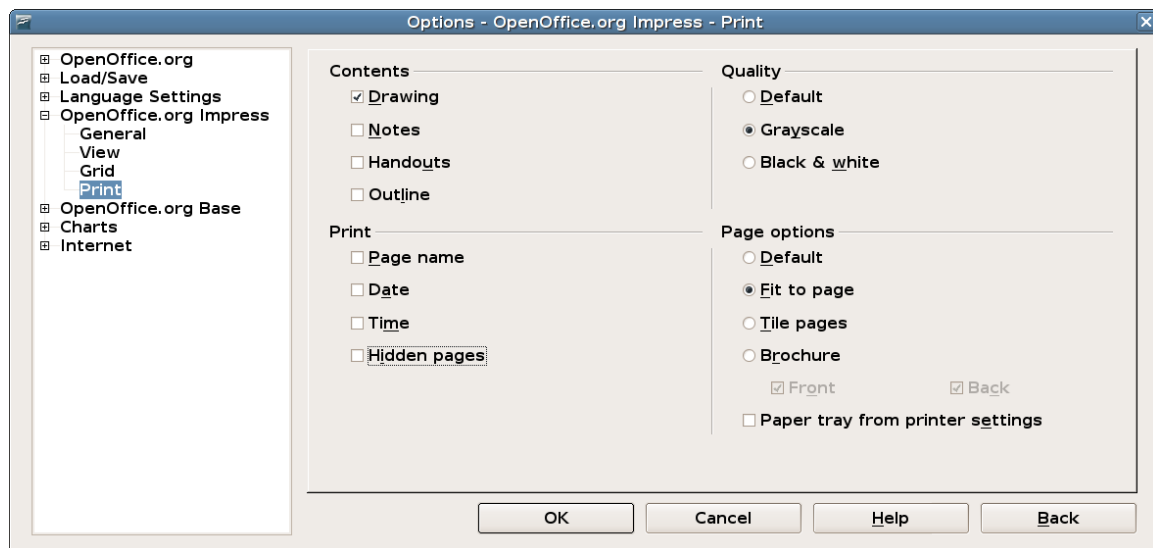


Figure 6: Specifying print options for Impress

Customizing the user interface

Customizing the menu font

If you want to change the menu font from that supplied by OOO to the system font for your operating system, do this:

- 1) Choose **Tools > Options > OpenOffice.org > View**.
- 2) Check **Use system font for user interface** and click **OK**.

Customizing menu content

You can customize menus in OpenOffice.org.

- 1) Choose **Tools > Customize**.
- 2) On the **Customize** dialog, pick the **Menus** tab (Figure 7).
- 3) In the **Save In** drop-down list, choose whether to save this changed menu for Impress or for a selected document.
- 4) In **OpenOffice.org Impress Menus**, select the menu you want to customize in the **Menu** drop-down list.
- 5) You can customize each menu by clicking on the **Menu** or **Modify** buttons.
- 6) You can add commands in a menu by clicking on the **Add** button.
- 7) You can create a new menu by clicking on the **New** button.
- 8) When you are done customizing menus, click **OK** to save your changes.

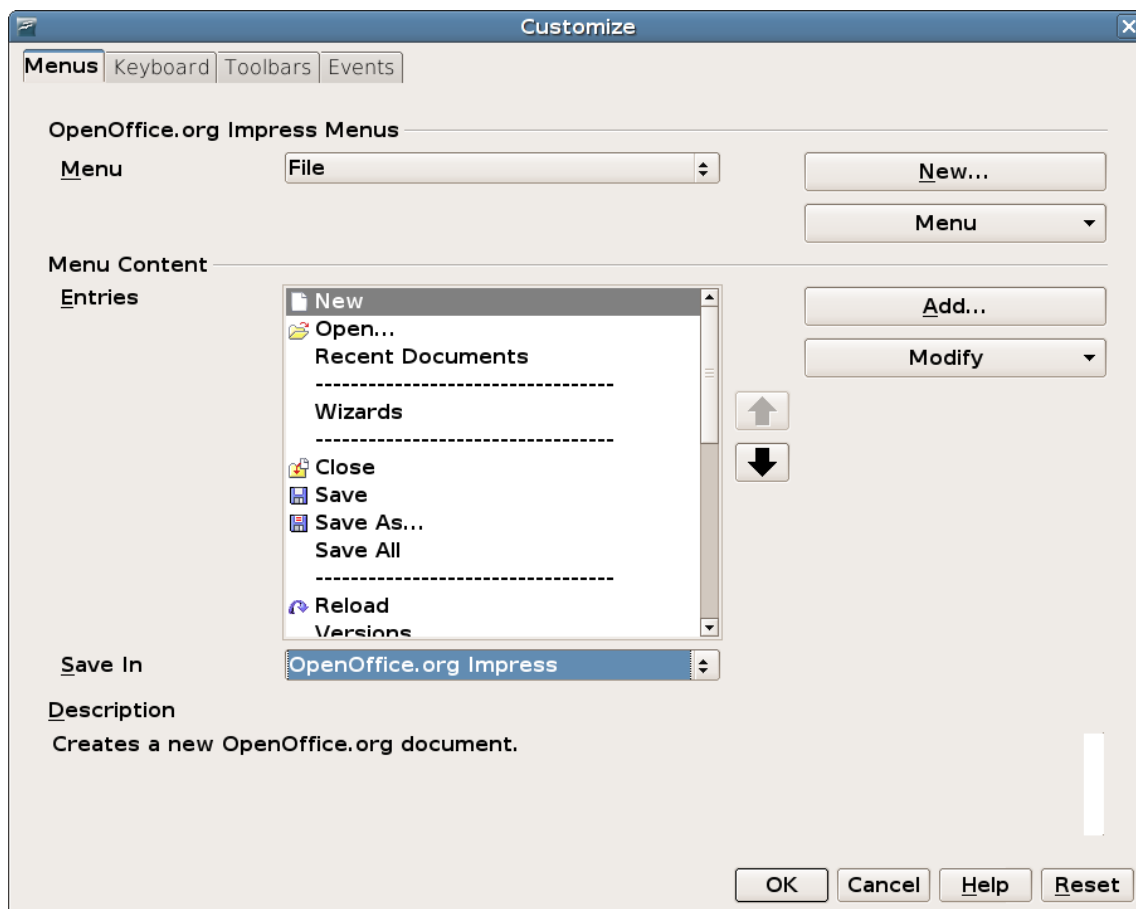


Figure 7. The Menus tab of the Customize dialog

Customizing toolbars

- 1) Open the toolbar customization dialog (Figure 8) in one of these ways:
 - On the toolbar, click the arrow at the end of the toolbar and choose **Customize Toolbar**.
 - Choose **View > Toolbars > Customize** from the menu bar.
 - Choose **Tools > Customize > Toolbars tab** from the menu bar.

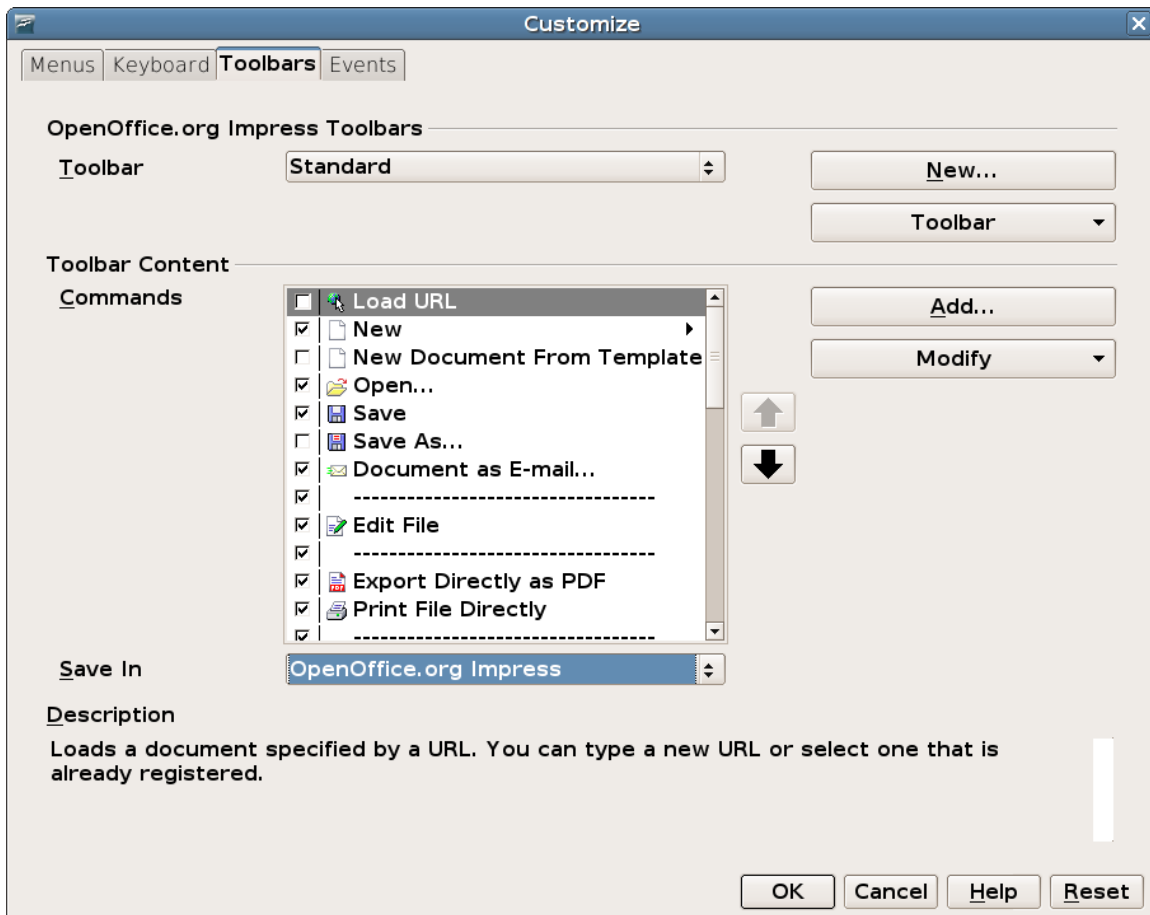


Figure 8. The Toolbars tab of the Customize window

- 2) In the **Save In** drop-down list, choose whether to save this changed toolbar for Impress or for a selected document.
- 3) In the **OpenOffice.org Impress Toolbars** section, choose the toolbar you want to modify, or click on the **New** button to create a new toolbar.
- 4) Click the **Toolbar** button on the right to display a drop-down list of choices.
- 5) To display or hide commands, select or deselect the checkboxes in the **Toolbar Content – Commands** section.
- 6) To change the position of commands on a toolbar, select a command and click the big up and down arrows to the right of the lists.

- 7) To add commands to a toolbar, click the **Add** button on the right. The Add Commands dialog opens. Follow the instructions on this dialog and then click **Add** to return to the Customize dialog.
- 8) When you are done customizing menus, click **OK** to save your changes.

Customizing keyboard shortcuts

The Appendix to this book lists the default keyboard shortcuts supplied with Impress. You can change these defaults or add new shortcuts. You can assign shortcuts to standard Impress functions or your own macros and save them for use with Impress only, or with the entire OpenOffice.org suite.

Caution

Be careful when reassigning your operating system's or OOO's predefined shortcut keys. Many key assignments are universally understood shortcuts, such as *F1* for Help, and are always expected to provide certain results. Although you can easily reset the shortcut key assignments to the OOO defaults, changing some common shortcut keys can cause confusion, frustration and possible data loss or corruption, especially if other users share your computer.

As an example, suppose you wish to assign a shortcut key to easily insert a duplicate slide in your presentation. You could assign the *Insert* key as a logical shortcut for this purpose, as described below:

- 1) Choose **Tools > Customize**.
- 2) On the **Customize** dialog, pick the Keyboard tab (Figure 9).
- 3) As the shortcut key assignment is only relevant with Impress, and not OpenOffice.org in general, select the **Impress** button (at the upper right corner of the **Keyboard** tab).
- 4) Next select **Insert** in the *Category* list and **Duplicate Slide** in the *Function* list.
- 5) Now select the shortcut key *Insert* in the *Shortcut keys* list and click the **Modify** button at the upper right.
- 6) Click **OK** to accept the change. Now the *Insert* shortcut key will insert a duplicate slide immediately after the currently selected slide.

Notes

1. All existing shortcut keys for the currently selected *Function* are listed in the *Keys* selection box. Since there was no currently assigned shortcut for the **Insert > Duplicate Slide** function the *Keys* list was empty. If it had not been, and you wished to reassign a shortcut key combination that was already in use, you would first have had to **Delete** the existing *Key*.
 2. Shortcut keys that are greyed-out in the listing on the Customize dialog, such as *F1* and *F10*, are not available for reassignment.
-

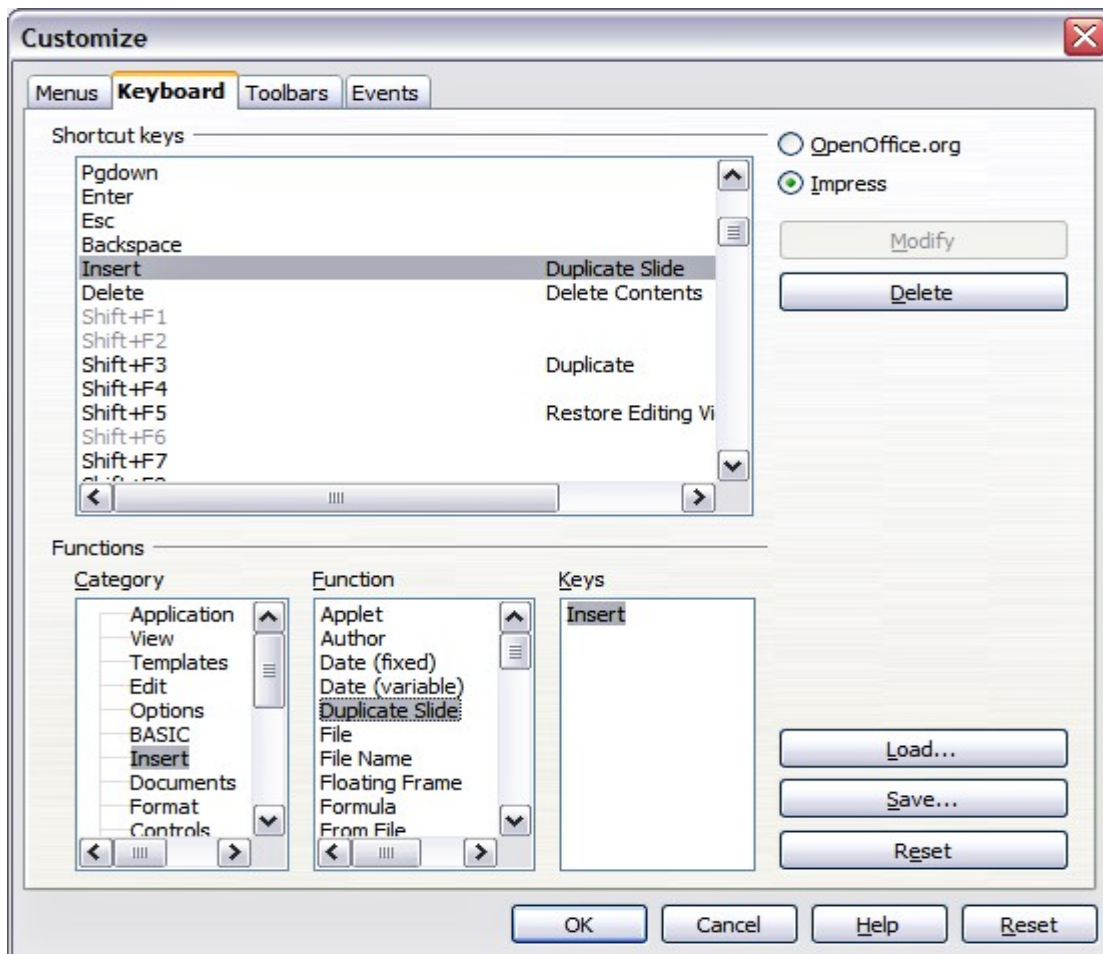


Figure 9: Customizing keyboard shortcuts

Saving changes to a file

Changes to the shortcut key assignments (and other configurations) can be saved in a keyboard configuration file for use at a later time, thus permitting you to create and apply different configurations as the need arises. To save keyboard shortcuts to a file:

- 1) After making your keyboard shortcut assignments, click the **Save** button near the bottom right of the Customize dialog (Figure 9).
- 2) In the Save Keyboard Configuration dialog, select *All files* from the **Save as Type** list.
- 3) Next enter a name for the keyboard configuration file in the **File name** box, or select an existing file from the list. If you need to, browse to find a file from another location.
- 4) Click **Save**. A confirmation dialog will appear if you are about to overwrite an existing file, otherwise there will be no feedback and the file will be saved.

Loading a saved keyboard configuration

To load a saved keyboard configuration file and replace your existing configuration, click the **Load** button near the bottom right of the Customize dialog (Figure 9), and then select the configuration file from the Load Keyboard Configuration dialog.

Resetting the shortcut keys

To reset all of the keyboard shortcuts to their default values, click the **Reset** button near the bottom right of the Customize dialog (Figure 1). Use this feature with care as no confirmation dialog will be displayed; the defaults will be set without any further notice or user input.

Running macros from key combinations

You can also define shortcut key combinations that will run macros. These shortcut keys are strictly user-defined; none are built in. For information on macros, see “Getting started with macros” in the *Getting Started* book.