

Introducing Easy Graphic Converter

Easy Graphic Converter is a powerful and easy-to-use tool that can convert image files and make thumbnails.

1. Easy Graphic Converter can both import and export images in the following formats:

- Windows Bitmap (*.bmp, *.dib)
- GIF (*.gif)
- JPEG (*.jpg, *.jpeg)
- Portable Graphics PNG (*.png)
- ZSoft PCX (*.pcx)
- Adobe PSD (*.psd)
- Targa (*.tga)
- TIFF (*.tif, *.tiff)
- Windows Metafile (*.wmf)
- Windows Enhanced Metafile (*.emf)

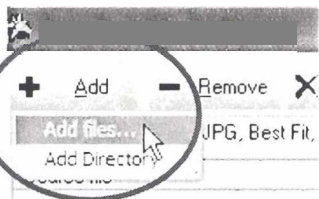
2. Easy Graphic Converter can make thumbnails in two ways:

- Best Fit
- Exact Size of specified width and height

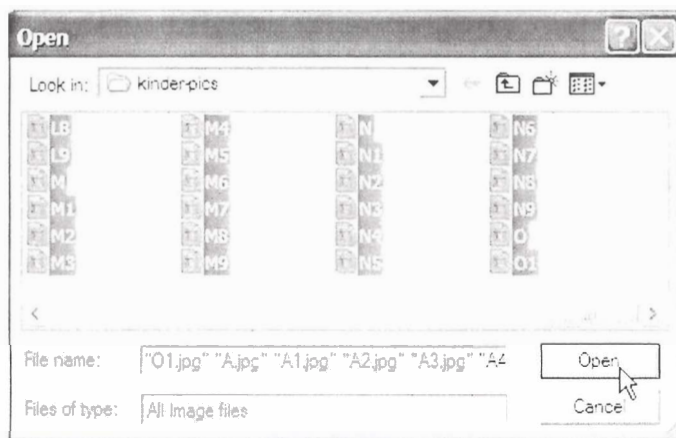
Or simply export images the same size as the original ones.

3. Easy Graphic Converter is a batch converting tool. You can convert batches of different formats images to one type of image in one time. It supports auto name.

How to use Easy Graphic Converter



1. Click "Add" button to add the images to the list box.
2. Select Add files....
3. Select all the pictures you want to convert. (Click on the first image, then hold down the shift key and click on the last picture.)



4. Click Open

5. Click the  Settings button to set the output settings.

Select the output format. Use JPEG for pictures.

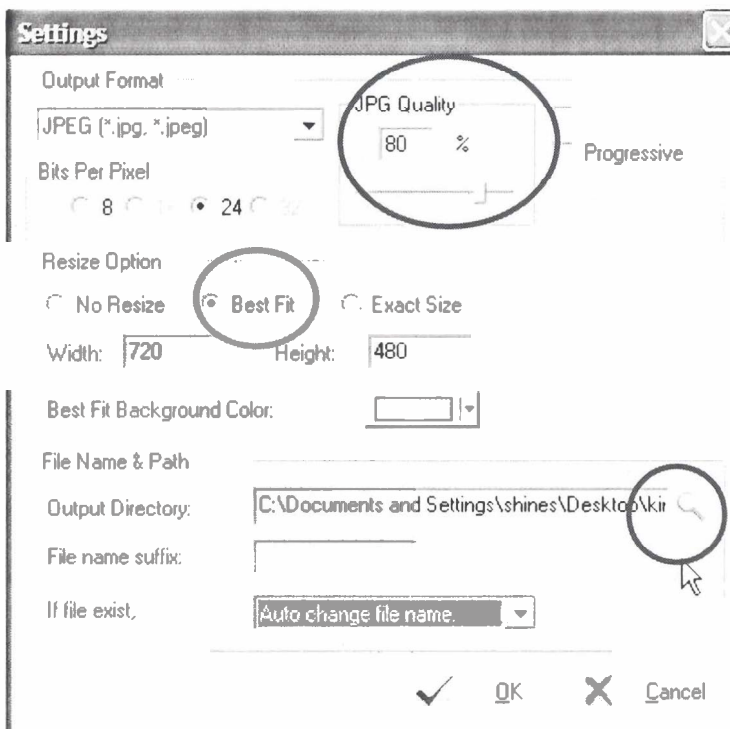
To reduce the file size, reduce the quality as much as you can without affecting the pictures too much. Use trial and error.


Select **Best Fit** and the size picture you need.

Click on the  magnifying glass and select a folder for saving.

Select to Auto change the file name.

Click Ok.



 Start

6. Click  button at bottom left to start converting. You can stop converting at any time by click the "Stop" button.

7. When the conversion completes, choose whether to generate a report.

Frequently Asked Questions (FAQ)

Q: Can I specify the image's bits per pixel?

A: Yes, for most image formats you can choose to output bits per pixel. Easy Graphic Converter supports 8 bit, 16 bit, 24 bit, 32 bit.

Q: Can I make a grayscale image?

A: Yes, simply by check the "Gray mode" checkbox in the setting dialog.

Q: Can I choose a background color for the Best Fit resize mode?

A: Yes, you can.

Q: If I choose "Auto name" when the output file exists, what will happen?

A: When the same name file already exists, the output file will add a number to the original file name until the same name file doesn't exist.

Q: What's the report?

A: The conversion report is a txt file. It includes the information of the original file path, destination file path, the conversion time etc.